

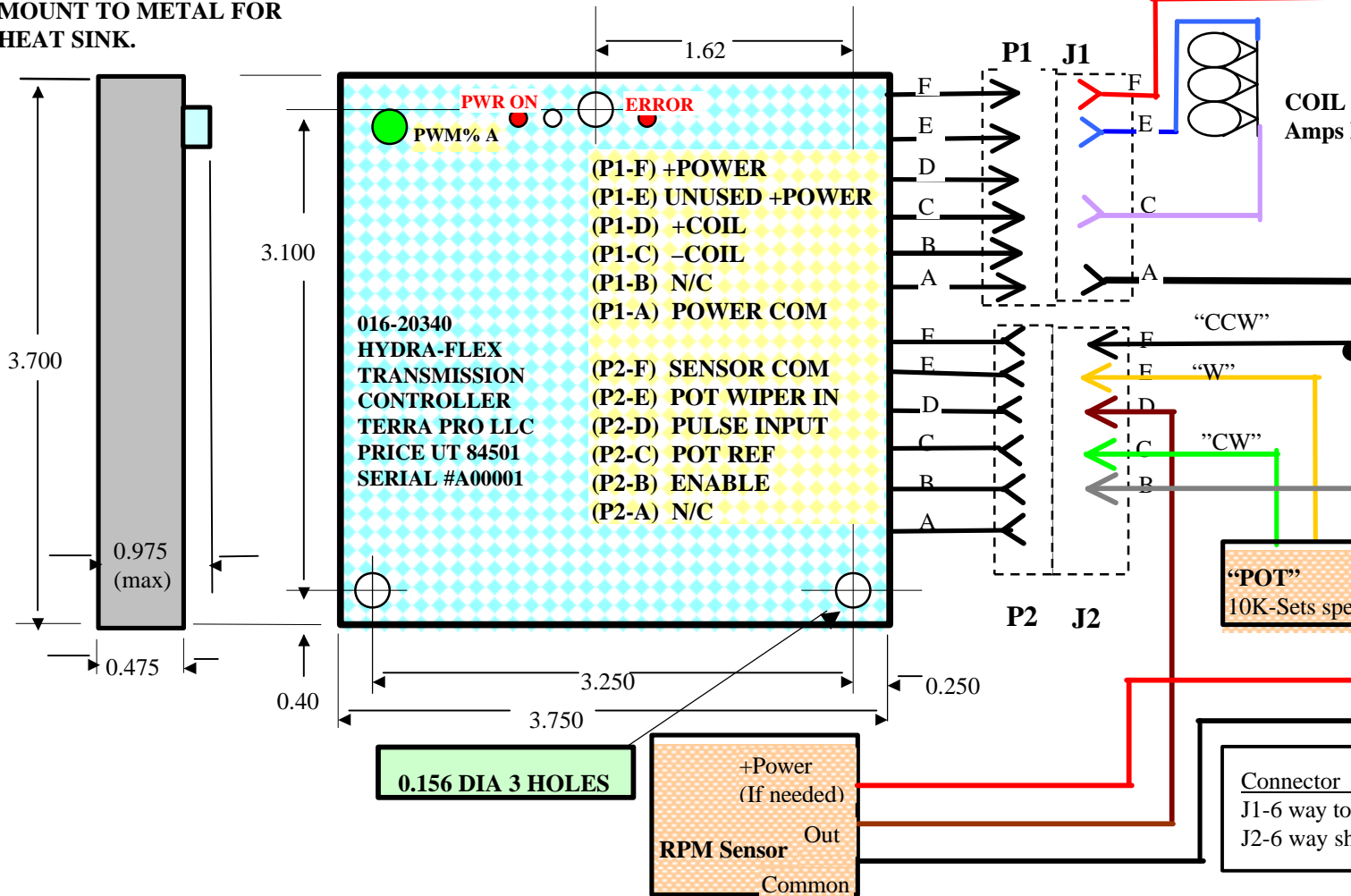


# Hydra-Flex Transmission Controller Unit-User's Guide

Wiring and Mounting Diagram

016-20340 PRODUCTION UNIT

KEEP BELOW 140 DEG. F  
MOUNT TO METAL FOR  
HEAT SINK.



## Single Pulse Regulator Controller Wiring:

1. Mount the controller using 6-32 mounting hardware.
2. Use the provided connectors to connect the units. Their mates are detailed in the table above. The wire colors are marked on the diagram

