



### Our Markets and Segments



## Mobile - Industrial - Marine

- ◆ Mining
- ◆ Agriculture
- ◆ Off-Road
- ◆ Re-cycling
- ◆ Forestry
- ◆ Remote Control
- ◆ Demolition
- ◆ Oil Field
- ◆ Refuse
- ◆ Construction
- ◆ Heavy Equipment
- ◆ Integrated OEM
- ◆ Military
- ◆ Special Use
- ◆ Power Generation
- ◆ Emission Control

High Country Tek, Inc. is located in Nevada City, CA, midway between Sacramento and Reno, Nevada. This is the center for our customer support department as well as being the main location for our product design, R&D and manufacturing. We have a team of industry seasoned electro-hydraulic regional Field Application Engineers ( FAE's ) covering the United States working with our customers to realize operational solutions in a timely manner. We offer training programs on our products, welcome customers feedback on our performance and we look forward to hopefully working with you on your next project.

For the latest company and product information, visit us at:

[www.highcountrytek.com](http://www.highcountrytek.com)



### Controllers and Applications

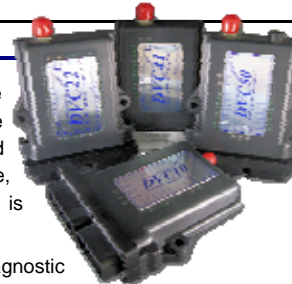
Module Description	HCT Model Number
New system controller with extended I/O	DVC 7
Master system controller module	DVC 10
Digital system 40 x I/O expansion module	DVC 21
Digital system 40 x I/O expansion module	DVC 22
Digital Output expansion module	DVC 41
Universal I/O module	DVC 50
Smart LCD Display	DVC61
Data Logger Module	DVC 70
J1939 CAN gateway and bridge module	DVC 80

#### Typical applications for DVC modules and systems:-

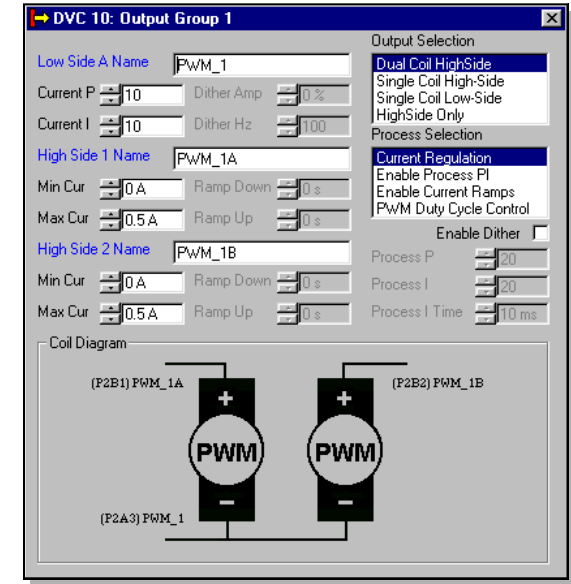
Auto Leveling / Auto Grading / Load Monitoring / Limiting
Generator control and supervision
Conveyor speed, position and force control
Open Loop Valve, Pump, Motor Control ( ideal for manifold systems )
Anti stall / HP limiting
Refuse industry i.e. Truck automation and pack control
Machine / application Speed & Position Control
Advanced hydraulic fan drive with brake charge/power steering e.t.c.
Agricultural sprayer and Spreader Control
Vehicle ( manned or unmanned ) Steering Control
Skid- Steer & Speed Control
Mobile and Automotive Traction Control
Hydrostatic Transmission Control

The High Country Tek, extensive range of **DVC modules** represents the industries most physically robust, field proven controller with intelligence, flexibility and expandability where it is needed most - your system.

These smart modules have visible diagnostic indicators, CAN communications, are simple to program with the **HCT Intella™ software** and easy to apply. For environmental stability, they are fully encapsulated for protection and very cost effective. The **DVC 10 master module** is capable of commanding multiple module systems that can grow to meet even the most demanding and complex of requirements. There are and peripheral equipment available that will allow you to design the system you want and optimize your project.



## DVC Programmable Controllers Intella™ Software Suite



Who better, and what more cost effective way to write the control program for your next project than you and your team of design engineers who clearly understand the goals set for your product.

High Country Tek, Inc. has developed user friendly software that allows engineering personel to create working functional programs quickly so that application operation can be realized and optimized in-house by the user. Cost effective, robust and industry ready modules from the **DVC** family range compliment the software and together make a very powerful, expandable and flexible system controls tool meaning your innovation can now meet reality.

### Customer Service & Technical support:

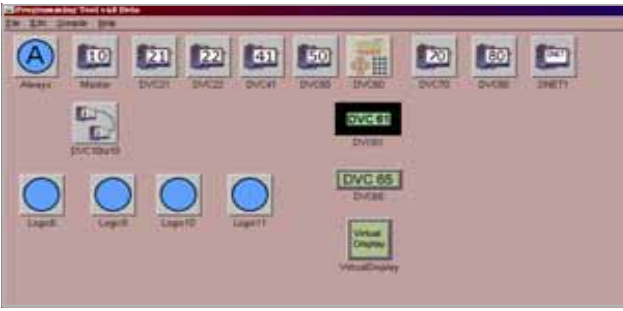
208 Gold Flat Court  
Nevada City, CA 95959

Phone: (1) 530 265 3236 Fax: (1) 530 265 3275



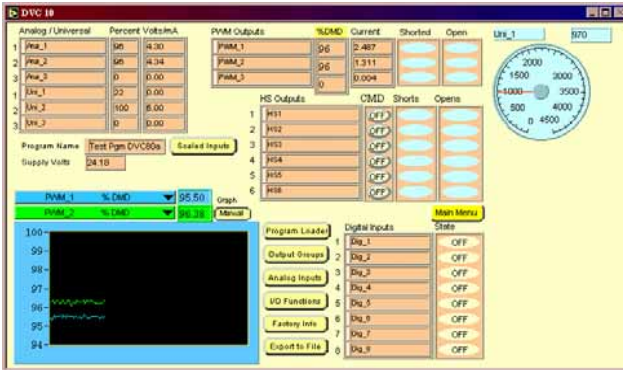
### Intella™ Software Suite

The **DVC7 & DVC10** Intella™ software suite includes two applications named "Programming Tool" and "Program Loader Monitor". These applications provide the means to configure, design, create, load, and monitor the user application.



The "**Programming Tool**" is used to create your application for the DVC7 & DVC10.

The "**Program Loader & Monitor**" ( **PLM** ) is used to load the user application into the DVC7 & DVC10 module and monitor the inputs and outputs in real-time as your application executes.



Look on the **High Country Tek**. website for the latest controller developments, additions, application hints & Tips, pre-written software profiles for complex algorithms and details of upcoming training programs, OR contact **HCT customer service on (1) 530 265 3236** for details on personalized product and **Intella™ Software Suite** training classes, on site application development and / or remote support.



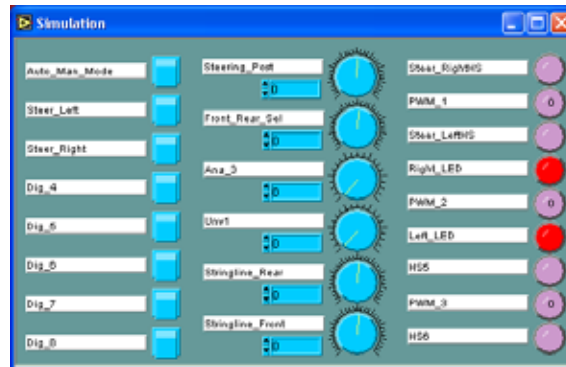
### Intella™ Software Suite

The following steps are used to create a user application:

1. Architect your system.
2. Define your system components, their interactions and operation.
3. Configure the DVC7 and/or the DVC10 and DVC expansion module's inputs and outputs that drive or sense your components
4. Program the control logic as to how the outputs respond to the inputs
5. Compile the program
6. Load the compiled program files into the DVC module
7. Simulate your application
8. Run your system and debug your application

You use The Programming Tool to accomplish steps 3, 4 and 5. Graphical displays allow you to specify the system components you will need and the electrical characteristics of your inputs and outputs. Text screens are provided to enter the program control logic for both your time critical and normal operations.

With our new "**Simulator**" much of your application code running in a DVC7 or DVC10 can be debugged prior to actually installing the controller on your target machine, and all of the inputs and outputs of the DVC7 & DVC10 can be controlled.



### Intella™ Software Suite

**High Country Tek Inc.** controllers will fully integrate your hydraulic system with your Prime Mover, Operator Controls and optional Radio-Remote. Perform open and closed loop control, Load Management, Fault Monitoring and Performance Data Acquisition. I/O status LED's on the modules means no guess work when trouble shooting, and **HCT controllers will drive all known manufacturers Electro-hydraulic components.**



**All that you need to get started:-**

- DVC Controller ( DVC7 or DVC10 )
- DVC expansion module(s) as needed
- Programming tool ( **Intella™** )
- Program Loader & Monitor ( **PLM** )
- RS232 Application loader cable
- CAN bus for command/Feedback

The **Intella™ software** allows the user to quickly familiarize themselves with the programming tool, build a system on-screen by selecting and adding modules from drop down pick lists, connect them 'virtually' together in the software and then write the operational code in understandable sub-routines called 'Bubbles'. This development method has proved to be very transportable between applications and especially personnel using the tool so internal application support, operational understanding, working knowledge and importantly, your intellectual property stays within your company.

## Contact Us

For product orders & enquiries

E-mail us at:- [info@highcountrytek.com](mailto:info@highcountrytek.com)